



Mississippi Counseling Association
A Branch of American Counseling Association
Serving Mississippi since 1950

MCA
PO BOX 353
LONG BEACH, MS 39560

SPRING 2014

"GUIDELINES FOR ETHICAL COUNSELING: Opening Our Hearts and Minds to the LGBTQ Community"

MCA's Human Rights Committee presented its annual Black History Month Program on Saturday, 2/22/14, at the Smith Robertson Museum and Cultural Center in Jackson, MS. The program began with definitions from ACA's Association for Lesbian, Gay, Bisexual, and Transgender in Counseling. These included: bisexual, gay, lesbian, queer, questioning, and transgender issues. Participants examined differences between heterosexism and sexism, 12 myths about homosexuality, and competencies required of counselors in regard to LGBTQ clients. The 6 stages of the Cass Identity Model describing the stages of gay and lesbian identity were reviewed. Some 'fast facts' about discrimination in schools and workplaces were discussed as well as what a child wants and needs from his/her parents while struggling with these issues. The presentation explored quotes from the book: Always My Child: A Parent's Guide to Understanding Your Gay, Lesbian, Bisexual, Transgendered or Questioning Son or Daughter by Kevin Jennings with Pat Shapiro, MSW, pub. Simon and Schuster, 2003. A lesson plan "Celebrate Kindness: No Name-Calling Week" from GLSEN was distributed. The discussions were lively and very informative. The presenters and participants are to be congratulated on giving their time and energy to enhance the treatment and acceptance of our gay sisters and brothers in Mississippi schools and workplaces. Participants included counselors from schools, mental health agencies and private practices. All participants evaluated the presentation in very positive ways. Three (3) CEU's were awarded. We hope to repeat the program at MCA's fall conference. The presenters were: Gloria Dansby-Giles, Ed.D., Frank Giles, Ph.D., Jeanne Polk, LPC, and Amy Adelman, LPC.

Submitted by: Amy Adelman, LPC, Co-Chairperson, MCA's Human Rights Committee

THE COMPASS

MESSAGE FROM THE PRESIDENT – MAY 2014



The theme I chose this year was Excellence in Counseling – Authenticity- Compassion – Advocacy. As the 2013-2014 year comes to a close I hope you all have experienced excellence in your counseling setting! What a humbling and wonderful experience I have had serving as president for the association that serves Mississippians from every walk of counseling life! I hope you enjoyed learning, networking and celebrating with colleagues and friends at our 63rd annual conference. I have learned so much from Dr. Robert Wicks for use in my career. I hope you found much meaning from his keynote address and his books. I was also so impressed with the continuing education sessions and hope you were able to implement many of the excellent techniques you learned over the three days. We were happy to increase the continuing education hours to 12 for the first time. The 2014 MCA Conference is already shaping up to bring the best and brightest to the spotlight again! Please join us in November!

The Dianne Dunagin Speed Emerging Leaders Class of 2014 included nine emerging leaders who attended the Institute for Leadership Training in July and have already stepped up into leadership roles. If you are interested in becoming an emerging leader, please complete the application on our website. You will never be alone as you walk on the shoulders of greatness of the many mentors willing to answer questions and support you on your leadership journey.

We had another active Legislative Advocacy agenda this year. Our lobbyists with Capitol Resources kept us informed about counseling issues and legislators informed about us. We did bring the Medicaid technical amendment again this year and will continue until we get licensed professional counselors included for reimbursement with Medicaid. MCA worked in support of SB 2423/HB 440 which clearly defined counseling roles and duties for school counselors per ASCA model. Thanks to the many who worked on that committee and succeeded in passing the bill.

Carolyn Anderson took on the role of Executive Director in April 2013 and has not looked back. Dianne Speed served Mississippi Counseling Association faithfully for many years and has been continuing her support as Carolyn gets her sea legs with this vessel. The Administrative Council decided on a new website and membership software. I am so grateful for all Carolyn and Susan Nicolais have done to ensure the new website and newsletter continue to improve.

President's Message continued

I would like to extend words of gratitude for all each of you have done to make the year Excellent!! To the members of the Strategic Planning Committee, the Administrative Council, the Executive Board, I say a heartfelt thank you for all you do for the counseling profession and for our students and clients. It has been my profound privilege to serve as your president this year. Keep taking care of yourself as you take care of others!

From my heart to yours,

DAWN

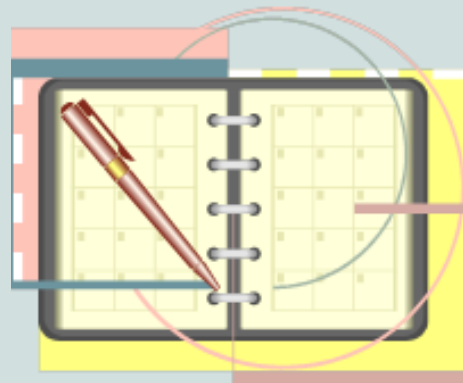
SAVE THE DATE!

MCA Fall Conference

Theme: "CRISIS & OPPORTUNITY" – The Intersection Where Counselors Live, Work & Play

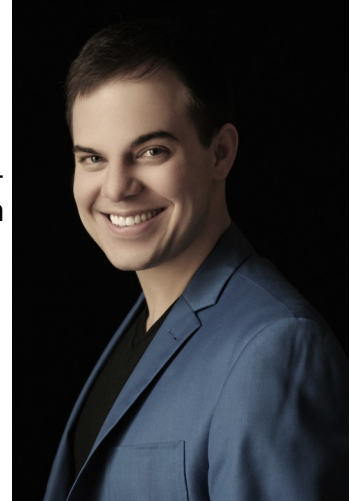
The program will be based on TRUE COLORS Personality-based training. Tracks will be designed to appeal to the learning styles of each of the 4 True Colors Personality types.

November 5 - 7, 2014
Jackson Convention Center
Jackson, MS
Marriott Hotel will serve as the Conference Hotel



MGSCA UPDATE

I'd like to thank Delta State and Jackson State Universities for believing in your students so much that you brought a large group of them to this past year's MCA Conference. I would like all professors, professionals, current and recent graduate students to encourage other current and recent (pre-licensure) graduate students to become involved with the MS Graduate Student Counselor Association (MGSCA), and/or other divisions and interest groups of MCA. Being involved will create invaluable connections for future internships, jobs, and/or field awareness. As President of MGSCA, I can tell you that our group is literally the future of MCA!



I have found it highly valuable to not only join, but also attend meetings with your local region's MCA division. If you do not have a university chapter of Chi Sigma Iota, then it may be advantageous to look at starting one! It is up to you to create awareness and acceptance of mental health importance within your community. Joining, or collaborating with, groups such as SGA, Rotary Club, or any other community/school organization, allows you to promote and integrate that importance of mental health. With more and more people being aware of and accepting the importance of mental health treatment, it is up to our generation to truly begin accepting others.

As upcoming mental health professionals we should be striving for an unbiased thought process. Whether we have strong traditional or religious values, we need to try trusting in ourselves instead of crediting personal gains and downfalls to unknown/known deities, beings, energies, traditions, etc. If we can live as ourselves due to our own true nature and knowledge, then it will be much easier to help our future clients find themselves! We are all unique, and one of our missions is to help others help themselves!

ANDREW J. BRELAND

MGSCA Incoming President

William Carey University Counseling Psychology Graduate Student

The Compass, Summer 2014

Article Submission Deadlines

Publication Date: August 31, 2014

Editorial content and photos due
August 3, 2014

Email to susan@nonprofit-growth.com

MISSISSIPPI STEPS UP TO THE PLATE

ASSOCIATION FOR ASSESSMENT AND RESEARCH IN COUNSELING (AARC) NEEDS ASSESSMENT SURVEY

A few months ago, the Mississippi Counseling Association partnered with the Association for Assessment and Research in Counseling (AARC), ACA's division of research and assessment, as part of a national survey to determine research training needs for counselors.

With a total of 278 people responding from Mississippi, we had the highest response of all 50 states. Participation in the survey was strong, with over 1000 responses with 41 of the 50 states represented. There also was participation across the four U.S. census regions (Northeast, Midwest, South and West) proportional to that of the U.S. census statistics.

Without the willingness of our members to participate and provide crucial information, Mississippi would not have been represented. More importantly the results of the survey would not have been as comprehensive. Mississippi stepped up to the plate to provide valuable data. Our thanks to all of our members who participated. A sampling of the data collected is shown below. For a complete summary of the responses from Mississippi visit our website at <http://mica.memberclicks.net/about-us>.

Highest Counseling Degree Attained:					
		Frequency	Percent	Valid Percent	Cumulative Percent
Valid	Masters	200	71.9	73.8	73.8
	EdS/CAS	45	16.2	16.6	90.4
	Doctorate	26	9.4	9.6	100.0
	Total	271	97.5	100.0	
Missing	System	7	2.5		
Total		278	100.0		

CALENDAR OF EVENTS

June

June 20 - 21, 2014
Play Therapy Workshop
Delta State University

June 26 - 27, 2014
MLPCA Clinical Supervision
Training
Sections Three and Four

June 30 - July 2, 2014
National Conference on Girl
Bullying & Relational
Aggression
Chicago, IL

July

July 9-11, 2014
Institute of Leadership Training
Natchez, MS

July 23-26, 2014
ACA Institute of Leadership
Training
Washington D.C.

October

October 31, 2014
Deadline for submitting True
Colors Quiz

November

November 5-7, 2014
MCA Annual Fall Conference,
Jackson, MS

CONTRIBUTING AUTHORS WANTED

The Compass is searching for individuals who are interested in writing articles for the newsletter. If you are interested in contributing your expertise through an article, please contact Susan Nicolais at the following email. Thanks for your help!

susan@nonprofit-growth.com

Announcements

TRUE COLOR QUIZ

The theme of the MCA Fall Conference is *CRISIS & OPPORTUNITY* - Counselors live, work & play at the intersection of "Crisis & Opportunity." The program will be based on TRUE COLORS Personality-based training. Tracks will be designed to appeal to the learning styles of each of the 4 True Colors Personality types. To get the most out of the annual conference, take the True Color Quiz on our website so you can align your educational sessions with your personal style.

NATIONAL CONFERENCE ON GIRL BULLYING AND RELATIONAL AGGRESSION

June 30 - July 2, 2014

The National Conference on Girl Bullying will help counselors, principals, teachers, social workers and other professionals understand the latest research and field-tested strategies designed to address relational aggression to prevent its potentially disastrous consequences. For more information, visit their website at <http://www.stopgirlbullying.com/>

NBCC CONTINUING EDUCATION POLICIES AND PROCEDURES CHANGES

The NBCC Board of Directors recently approved changes to the NBCC Continuing Education Policies and Procedures regarding co-sponsorship. Effective May 1, 2014, Section III.C, Section XII and Section XIII will be removed from the policy and the following will be added to Section I:

“An ACEP may not use its ACEP status and/or ACEP number to assist other continuing education providers in offering NBCC clock hours unless both of the following conditions are satisfied:

1. The ACEP has primary involvement in the planning and implementation of all aspects of the program.
2. The ACEP and the other continuing education provider share the initial investment, risks, and profits; however, the ACEP is solely accountable for NBCC Continuing Education Policies and Procedures compliance.

NBCC has sole discretion in determining whether the conditions have been satisfactorily met.

A completed ACEP Joint Venture Update Form, including the documentation, must be submitted within 90 days following the program date when two or more ACEPs plan and implement a program together and offer NBCC clock hours.”

Effective May 1, 2014, ACEPs may not collaborate or enter into new agreements that violate this policy. If your organization is currently in a contractual obligation that is not consistent with the above-mentioned policy, all such arrangements must be voided by April 30, 2015. ACEPs must not co-sponsor continuing education programs in name and number only; you must be able to demonstrate that you have primary involvement in the planning and implementation of all aspects of the program and a completed ACEP Joint Venture Form must be submitted when applicable.

Callie Gordon, MEdS, NCC, LPCA
Continuing Education Coordinator

